

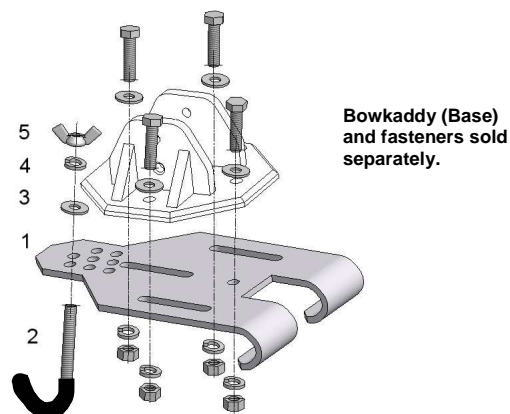
Foreword

Thank you for purchasing Kaddy Bracket™ ATV. This accessory product is designed to increase the mounting versatility of Bowkaddy™ on your ATV. Please read all instructions thoroughly prior to installation and retain for future reference. For further information including a current electronic copy of this document, visit alarisconcepts.com.

Contents

#	Qty	Size	Description
1	1	-	Black anodized aluminum Body
2	1	5/16" x 3"	Rubber-coated J Bolt
3	1	5/16"	Flat Washer
4	1	5/16"	Lock Washer
5	1	5/16"	Wing Nut
6	1	-	Product Sheet

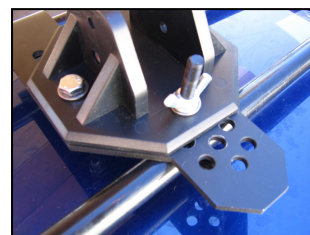
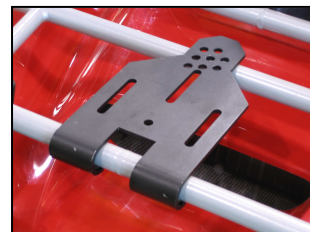
Note – image shows only one possible mounting configuration. The position/orientation of the base and the location of the J Bolt will depend on the geometry of your particular ATV rack. See Installation section below for further explanation.

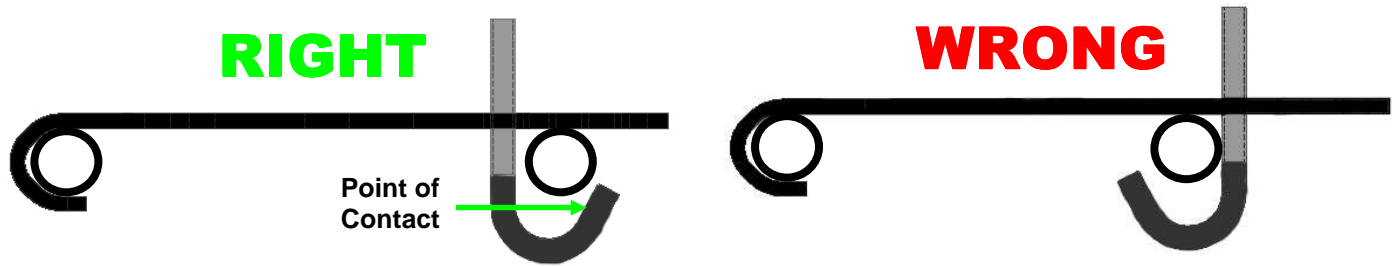


Installation

Kaddy Bracket™ ATV (KBA) is designed to facilitate the mounting of Bowkaddy™ on certain models of ATV's. The information contained herein assumes that Bowkaddy™ cannot be satisfactorily mounted on your ATV without KBA. It is generally intended for use on quads equipped with tubular or channel metal racks. For composite-rack quads, it is often possible to fasten Bowkaddy™ directly to the composite rack with the bolt fasteners provided with Bowkaddy™. Consult the Bowkaddy™ Product Sheet or alarisconcepts.com if you are unsure of the necessity of this product. Contact Alaris Concepts if you are considering other installation options to ensure safe and secure operation.

- Obtain required equipment: two 1/2" or adjustable wrenches, Bowkaddy™ and bow.
- Position the Base of Bowkaddy™ on the KBA Body(1).
- Determine the best mounting location on the ATV. Factors affecting this decision include:
 - personal preference (front rack, rear rack, bow position on rack).
 - ensure that bow position will not interfere with the general operation of the ATV (steering, driver comfort).
 - try to mount KBA in the center of the rack to avoid clearance issues.
 - KBA must be mounted between parallel tubing sections.
 - distance between parallel tubes should be less than 7 1/2".
 - Bowkaddy™ Base can be positioned anywhere along the KBA Body(1) as long as at least three fasteners are used for securement.
- Loosely fasten the Base of Bowkaddy™ to the KBA Body(1) using the 5/16" bolts, flat washers, lock washers and nuts provided with Bowkaddy™.
- Position KBA in the chosen location on the quad rack as shown. Insert the J Bolt(2) into the proper hole or slot of KBA. **Choosing the correct hole for the J Bolt is critical to the stability of KBA. When secured around the ATV rack frame, the opening of the J Bolt must be in the same direction as the opening of the bend in the KBA (see the diagrams that follow). This will ensure maximum stability during use. Also note the point of contact. It is sometimes necessary to replace one of the KBA fasteners with the J Bolt itself as shown in the picture at right.**





6. When the correct JBolt(2) position has been determined, tighten the fasteners holding the Base to the KBA Body(1). Be careful not to overtighten.
7. Attach Flat Washer(3), Lock Washer(4), and Wing Nut(5) to J Bolt(2) and hand-tighten.
8. Re-attach Bowkaddy™ Main Support Arm to Base as per Assembly instructions.
9. With Bowkaddy™ assembly complete, adjust and secure the Swing Arms to fit your bow in the desired mounting position and insert your bow into the rubber grips. You're ready to hit the trail!



Use, Care and Maintenance

Kaddy Bracket™ ATV is to be used in conjunction with Bowkaddy™. Together, they will give you years of helpful service in your archery pursuits if the following points are heeded:

- Only use to store and transport archery bows. Not intended for general load securement.
- Adjust position of Swing Arms to match limb angles. Line up clamps with region of limbs that are ~1/4" thick. For most basic compound bows, the metal pin in the Swing Arms will line up with the slot or one of the holes in the Main Support Arm. For some bows, it may be necessary to fully extend the swing arms so that the pins fall outside the main support arm. In this case, the rubber washer compressed between the arms will provide sufficient friction to keep the arms stationary while inserting and removing the bow.
- For a small percentage of bows, the pins may not match up ideally with the existing holes in the Main Support Arm. It is then allowable to drill a maximum of two additional holes per side. Using a 17/64" or 7mm bit, drill the holes to a maximum depth of 3/16" or 5mm. Allow at least 1/8" or 4mm of material between the hole, the edge of the component and the other holes. Drilling the hole too close to the edge or to the other holes will weaken the component beyond an acceptable limit.
- **Insert/remove bow one limb at a time by applying equal and opposite forces to the limb and swing arm. Do not use excessive force.**
- Bow should not contact any plastic or metal component of the rack. Ensure a snug fit in the rubber grips.
- Bow should not contact any part of the ATV or other objects on the ATV.
- Bowkaddy™ should be mounted such that gravity cannot allow the bow to come free from the rubber grips.
- It is advisable in some situations that pins (not included) be inserted through the holes at the end of the swing arm grips to prevent the bow limbs from bouncing out of the grips.
- A lock mechanism (not provided) can be inserted through the hole at the end of the swing arm grips; this serves as a visual theft deterrent only and does not provide guaranteed protection.
- Fold swing arms inward and secure with wing nuts for compactness when not in use.
- Check all fasteners regularly to ensure that they remain tight.
- Do not subject Bowkaddy™ or Kaddy Bracket™ ATV to unnecessary impact or overload.
- Remove Bowkaddy™ from your ATV when not being used for extended periods of time.
- Not for use or play by young children. Rotating swing arms on Bowkaddy™ can create a pinch hazard.

Warranty & Disclaimer

Bowkaddy™ and accessories are designed for maximum mounting versatility. However, if the original purchaser is unable to acceptably mount Bowkaddy™ and/or Kaddy Bracket™ ATV or is otherwise dissatisfied with the product(s), Alaris Concepts will accept a return shipment of the product(s) with proof(s) of purchase in exchange for a refund equal to the purchase price. When assembled, installed and used as per the instructions contained in this Product Sheet, Alaris Concepts warrants to the original purchaser any original product defects for a period of 5 years. Damage to Bowkaddy™, Kaddy Bracket™ ATV, archery equipment and/or ATV resulting from poor installation and/or misuse of the product(s) is not covered by Alaris Concepts. Alaris Concepts reminds all users to know and follow all applicable regulations governing the transportation and deployment of archery weapons. For further warranty information and processing, general information or feedback, contact Alaris Concepts in Wainwright, Alberta, Canada. Phone: (780) 842-7150. Email: info@alarisconcepts.com. Website: www.alarisconcepts.com.